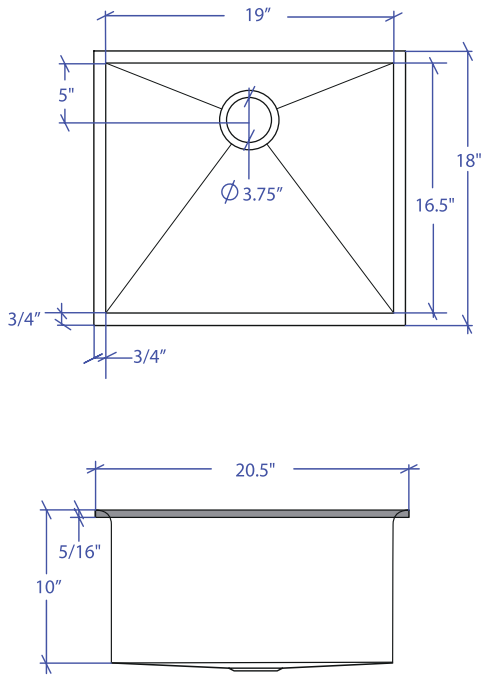


ARC MARFS-653SB



*Flush-Mount Installation Kit is included with each sink
 *Custom ADA compliant versions are available



FEATURES

- 16-gauge type 304 stainless steel
- Solid brass under rim support
- 1/4" round profile basin

TECHNICAL INFORMATION

- External dimension: 20.5" L x 18" W x 10" D
- Basin dimensions: 19" L x 16.5" W x 10" D
- Frame width: 3/4" • Frame thickness: 5/16"

FINISHES

- Satin Brushed stainless steel

INSTALLATION OPTIONS

- Flush-mount • Drop-in

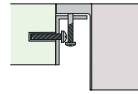
MINIMUM CABINET SIZE (I.D.)

- Flush-mount 19.5"

INDUSTRY'S ONLY STAINLESS STEEL SINK DESIGNED SPECIFICALLY TO BE FLUSH-MOUNTED

INTERNATIONAL PATENT PENDING

INSTALLATION TYPE

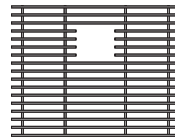


Flush-mount

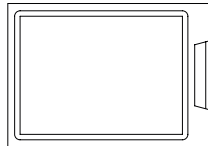


Included MTK-610AL
Flush Mount Kit

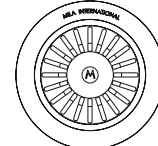
OPTIONAL ACCESSORIES



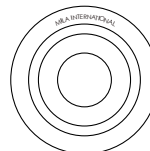
MBG-6506SB
Basin Grid



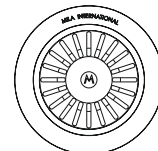
MCB-651BB
Cutting Board



MKD-101GDSB
Strainer



MDC-101GDSB
Disposal Collar



MDC-102GDSB
Disposal Collar

| PROJECT INFORMATION | | | |
|---------------------|-----|-----|--|
| Project | | | |
| Date | / / | QTY | |
| Specifier | | | |
| Contact | | | |
| Note | | | |