

# ORION MOUS-503GDSB



\*Custom ADA compliant sinks are available

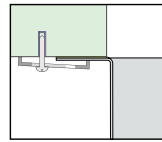
- FEATURES**  
 16-gauge type 304 stainless steel  
 Bevel basin design
- TECHNICAL INFORMATION**  
 External dimension: 27"Lx17"Wx10"D  
 Basin dimensions: 25"Lx15"Wx10"D  
 Rim width: 1"  
 Rim thickness: 1/16"

- FINISHES**  
 Gold PVD satin brushed stainless steel
- INSTALLATION OPTIONS**  
 Under-mount

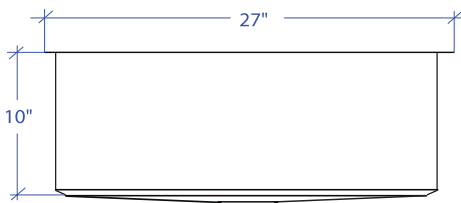
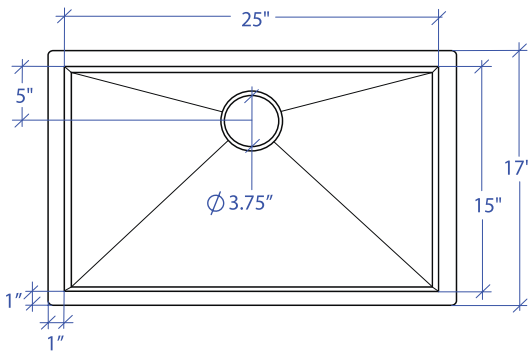
- MINIMUM CABINET SIZE (I.D.)**  
 Under-mount 30"

**US DESIGN PATENT D618,324 S**

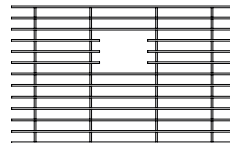
**DUAL-MOUNT INSTALLATION**



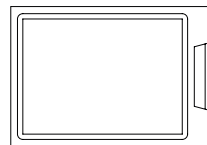
Under-mount



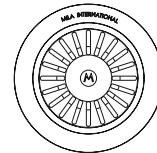
**ACCESSORY OPTIONS**



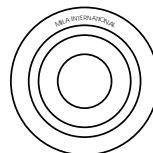
MBG-055GDSB  
Basin Grid



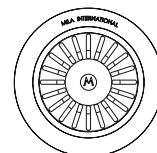
MCB-501BB  
Cutting Board



MKD-101GDSB  
Strainer



MDC-101GDSB  
Disposal Collar



MDC-102GDSB  
Disposal Collar

PROJECT INFORMATION			
Project			
Date	/ /	QTY	
Specifier			
Contact			
Note			

UNDER-MOUNT