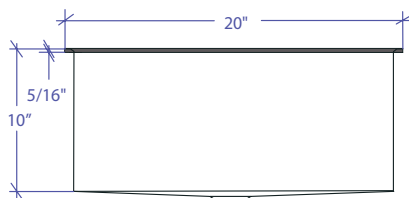
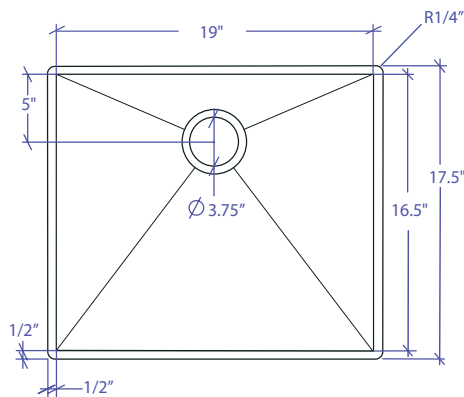


PROFILE MPOFS-653GPSB-R



*Flush-Mount Installation Kit is included with each sink
*Custom ADA compliant versions are available



• FEATURES

- 16-gauge type 304 stainless steel
- Stainless steel rim support tubing
- 90° zero radius rim and basin design

• TECHNICAL INFORMATION

- External dimension: 20" L x 17.5" W x 10" D
- Basin dimensions: 19" L x 16.5" W x 10" D
- Rim width: 1/2"
- Rim thickness: 5/16"
- Rim corner: 1/4" round

• FINISHES

- Graphite PVD satin brushed stainless steel

• INSTALLATION OPTIONS

- Flush-mount

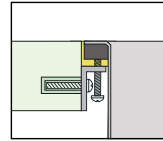
• MINIMUM CABINET SIZE (I.D.)

- Flush-mount 23"

• INDUSTRY'S ONLY STAINLESS STEEL SINK DESIGNED SPECIFICALLY TO BE FLUSH-MOUNTED

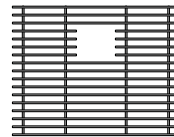
• INTERNATIONAL PATENT PENDING

• FLUSH-MOUNT INSTALLATION

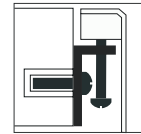


Flush-mount

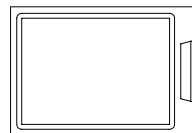
• ACCESSORIES OPTIONS



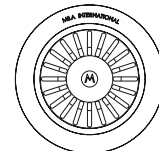
MBG-6506GPSB
Basin Grid



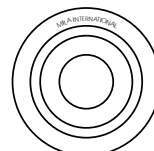
Flush Mount Kit
(Included)
MTK-616AL



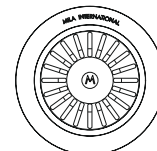
MCB-651BB
Cutting Board



MKD-101GPSB
Strainer



MDC-101GPSB
Disposal Collar



MDC-102GPSB
Disposal Collar

PROJECT INFORMATION

Project			
Date	/ /	QTY	
Specifier			
Contact			
Note			