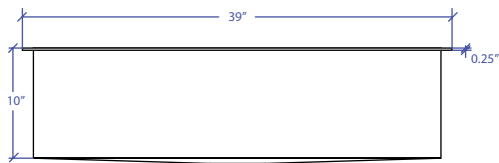
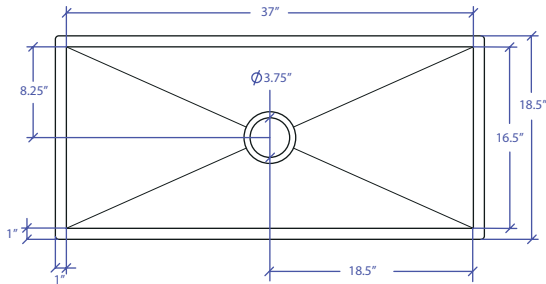


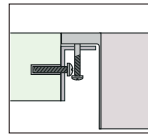
# WORKSTATION MFWS-637SB



INDUSTRY'S ONLY STAINLESS STEEL SINK DESIGNED SPECIFICALLY TO BE FLUSH-MOUNTED



- FEATURES**  
 16-gauge type 304 stainless steel  
 EZ clean bevel basin design  
 Space saving/ dual slide rail design
- TECHNICAL INFORMATION**  
 External dimension: 39" Lx18.5" Wx10" D  
 Basin dimensions: 37" Lx16.5" Wx10" D  
 Rim width: 1"  
 Rim thickness: 1/4"  
 Rim Corner: 1/4" round
- FINISHES**  
 Satin Brushed stainless steel
- INSTALLATION OPTIONS**  
 Flush-mount
- MINIMUM CABINET SIZE (I.D.)**  
 Flush-mount 41"
- INSTALLATION TYPE**

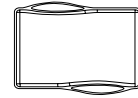


Flush-mount

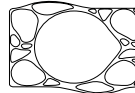
## INCLUDED ACCESSORIES



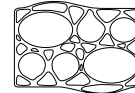
Flush Mount Kit  
MTK-620AL



MWCB-651BB  
Cutting Board

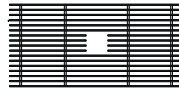


MWSM-651SB  
Salad Mixer

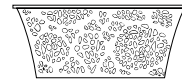


MWBM-651SB  
Bain Marie

## OPTIONAL ACCESSORIES



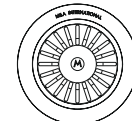
MBG-6519SB  
Basin Grid



MWC-651SB  
Colander



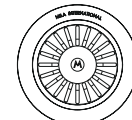
MWSS-651SB  
Side Sink



MKD-101SB  
Strainer



MDC-101SB  
Disposal Collar



MDC-102SB  
Disposal Collar

US Patent No. 9,988,799 CA Patent No. 2579506  
International Patent Pending

PROJECT INFORMATION			
Project			
Date	/ /	QTY	
Specifier			
Contact			
Note			