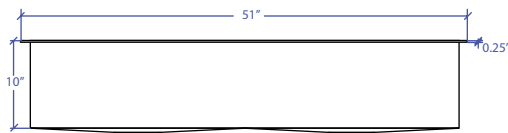
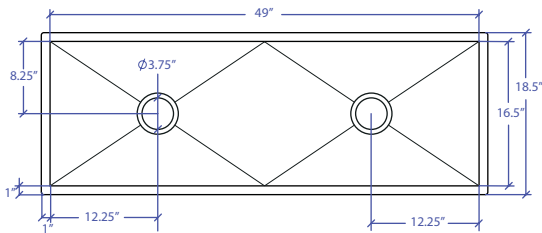




INDUSTRY'S ONLY STAINLESS STEEL SINK DESIGNED SPECIFICALLY TO BE FLUSH-MOUNTED



• FEATURES

- 16-gauge type 304 stainless steel
- EZ clean bevel basin design
- Space saving/ dual slide rail design
- Dual drain design

• TECHNICAL INFORMATION

- External dimension: 51" Lx18.5" Wx10" D
- Basin dimensions: 49" Lx16.5" Wx10" D
- Rim width: 1"
- Rim thickness: 1/4"
- Rim Corner: 1/4" round

• FINISHES

- Gold PVD Satin Brushed stainless steel

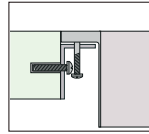
• INSTALLATION OPTIONS

- Flush-mount

• MINIMUM CABINET SIZE (I.D.)

- Flush-mount 53"

• INSTALLATION TYPE

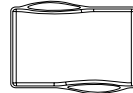


Flush-mount

• INCLUDED ACCESSORIES



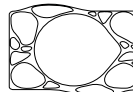
Flush Mount Kit
MTK-621AL



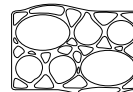
MWCB-651GDBB
Cutting Board



MWC-651GDSB
Colander

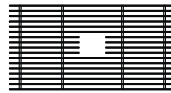


MWSM-651GDSB
Salad Mixer

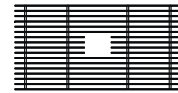


MWBM-651GDSB
Bain Marie

• OPTIONAL ACCESSORIES



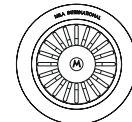
MBG-6520GDSB
Basin Grid



MBG-6520GDSB
Basin Grid



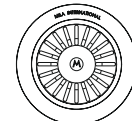
MWSS-651GDSB
Side Sink



MKD-101GDSB
Strainer



MDC-101GDSB
Disposal Collar



MDC-102GDSB
Disposal Collar

US Patent No. 9,988,799 CA Patent No. 2579506
International Patent Pending

PROJECT INFORMATION			
Project			
Date	/ /	QTY	
Specifier			
Contact			
Note			