

FLATIRON ADAMUD-652SB



• FEATURES

- 16-gauge type 304 stainless steel
- 90° zero radius design

• TECHNICAL INFORMATION

- External dimension: 31" Lx18.5" Wx5.5" D
- Basin dimensions:
Left: 16" Lx16.5" Wx5.5" D
Right: 12" Lx16.5" Wx5.5" D

• FINISHES

- Satin Brushed stainless steel

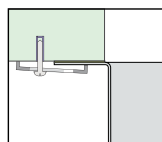
• INSTALLATION OPTIONS

- Under-mount

• MINIMUM CABINET SIZE (I.D.)

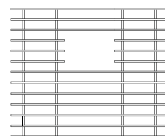
- Under-mount 34"

• DUAL-MOUNT INSTALLATION

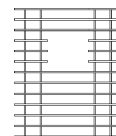


Under-mount

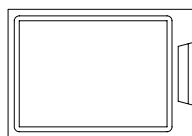
• ACCESSORY OPTIONS



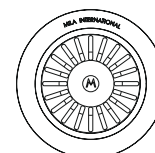
MBG-6504SB
Basin Grid



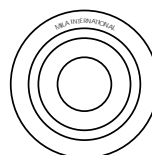
MBG-6501SB
Basin Grid



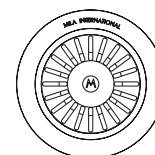
MCB-651BB
Cutting Board



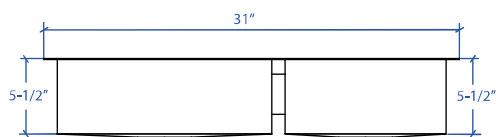
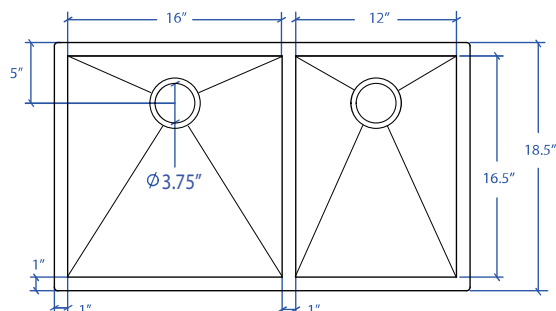
MKD-101SB
Strainer



MDC-101SB
Disposal Collar



MDC-102SB
Disposal Collar



PROJECT INFORMATION			
Project			
Date	/ /	QTY	
Specifier			
Contact			
Note			

ADA UNDER-MOUNT