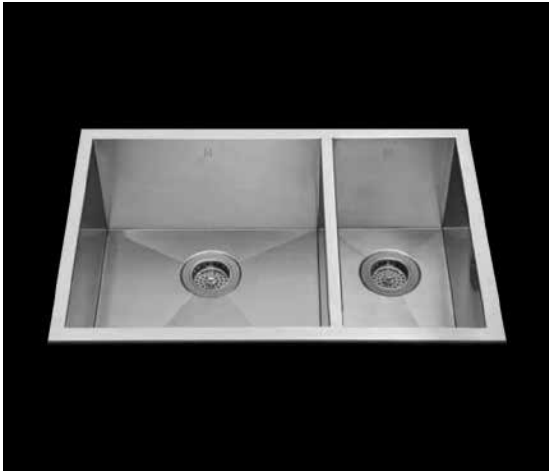
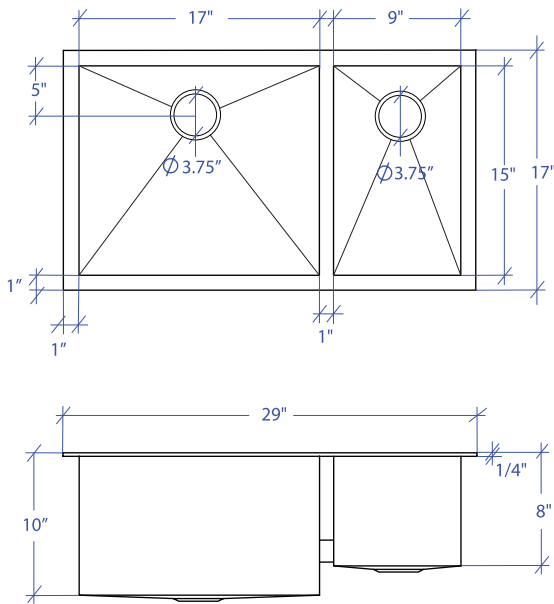


ATELIER MTD-502SB



*Custom ADA compliant sinks are available



• FEATURES

16-gauge type 304 stainless steel
 TRI-MOUNT™ installation system

• TECHNICAL INFORMATION

External dimension: 29" L x 17" W x 10" D
 Basin dimensions:
 Left: 17" L x 15" W x 10" D
 Right: 9" L x 15" W x 8" D
 Rim width: 1"
 Rim thickness: 1/4"

• FINISHES

Satin brushed stainless steel

• INSTALLATION OPTIONS

Flush-mount
 Drop-in
 Under-mount

• MINIMUM CABINET SIZE (I.D.)

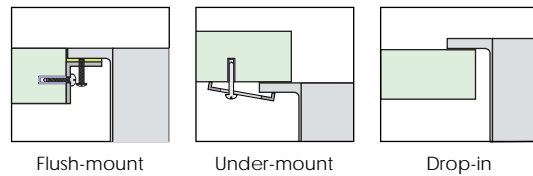
Flush-mount 32"
 Drop-in 29"
 Under-mount 33"

• INDUSTRY'S ONLY STAINLESS STEEL SINK DESIGNED SPECIFICALLY TO BE FLUSH-MOUNTED

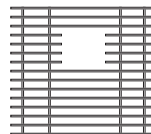
• U.S. PATENT NO. 9,988,799

• CANADIAN PATENT NO. 2579506

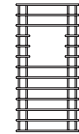
• TRI-MOUNT INSTALLATION



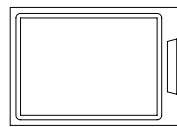
• ACCESSORIES



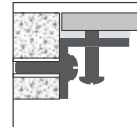
MBG-053BB
Basin Grid



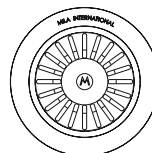
MBG-051SB
Basin Grid



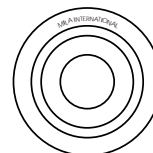
MCB-501BB
Cutting Board



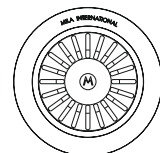
MTK-106AL
Mounting Kit



MKD-101SB
Strainer



MDC-101SB
Disposal Collar



MDC-102SB
Disposal Collar

PROJECT INFORMATION			
Project			
Date	/ /	QTY	
Specifier			
Contact			
Note			