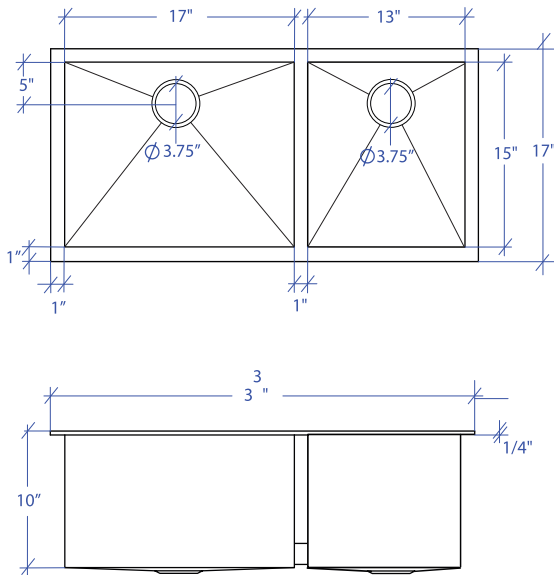


ATELIER MTD-503SB



*Custom ADA compliant sinks are available



- **FEATURES**
 16-gauge type 304 stainless steel
 TRI-MOUNT™ installation system

- **TECHNICAL INFORMATION**
 External dimension: 33" L x 17" W x 10" D
 Basin dimensions:
 Left: 17" L x 15" W x 10" D
 Right: 13" L x 15" W x 9" D
 Rim width: 1"
 Rim thickness: 1/4"

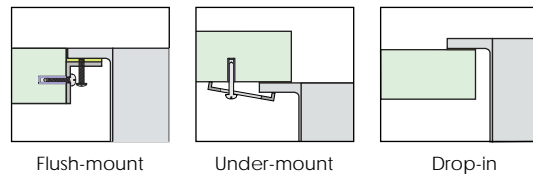
- **FINISHES**
 Satin brushed stainless steel

- **INSTALLATION OPTIONS**
 Flush-mount
 Drop-in
 Under-mount

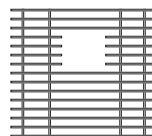
- **MINIMUM CABINET SIZE (I.D.)**
 Flush-mount 36"
 Drop-in 33"
 Under-mount 37"

- **INDUSTRY'S ONLY STAINLESS STEEL SINK DESIGNED SPECIFICALLY TO BE FLUSH-MOUNTED**

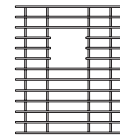
- **U.S. PATENT NO. 9,988,799**
- **CANADIAN PATENT NO. 2579506**
- **TRI-MOUNT INSTALLATION**



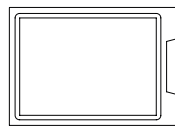
- **ACCESSORIES**



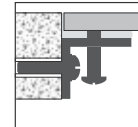
MBG-053BB
Basin Grid



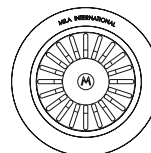
MBG-052SB
Basin Grid



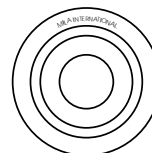
MCB-501BB
Cutting Board



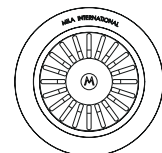
MTK-107AL
Mounting Kit



MKD-101SB
Strainer



MDC-101SB
Disposal Collar



MDC-102SB
Disposal Collar

PROJECT INFORMATION			
Project			
Date	/ /	QTY	
Specifier			
Contact			
Note			