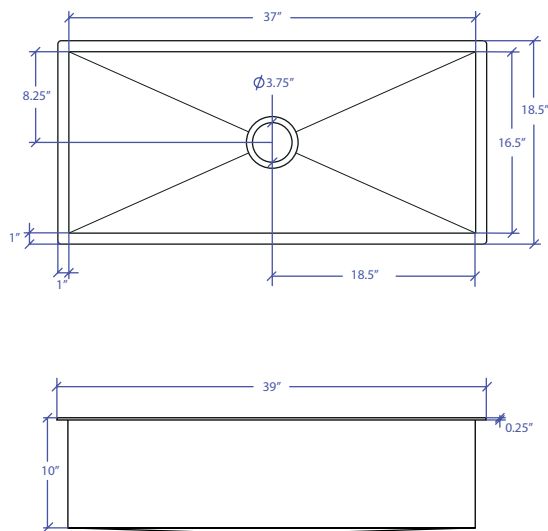


# WORKSTATION MFWS-637GPSB



**INDUSTRY'S ONLY STAINLESS STEEL SINK DESIGNED SPECIFICALLY TO BE FLUSH-MOUNTED**



US Patent No. 9,988,799 CA Patent No. 2579506  
International Patent Pending

PROJECT INFORMATION			
Project			
Date	/ /	QTY	
Specifier			
Contact			
Note			

## • FEATURES

- 16-gauge type 304 stainless steel
- 5-gauge 304 stainless steel rim

## • TECHNICAL INFORMATION

- External dimension: 39"Lx18.5"Wx10"D
- Basin dimensions: 37"Lx16.5"Wx10"D
- Rim width: 1"
- Rim thickness: 1/4"
- Rim Corner: 1/4" round

## • FINISHES

- Graphite PVD Satin Brushed stainless steel

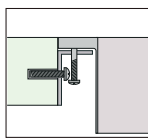
## • INSTALLATION OPTIONS

- Flush-mount

## • MINIMUM CABINET SIZE (I.D.)

- Flush-mount 41"

## • INSTALLATION TYPE

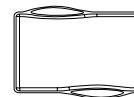


Flush-mount

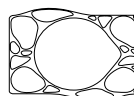
## • INCLUDED ACCESSORIES



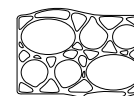
Flush Mount Kit  
MTK-620AL



MWCB-651GPBB  
Cutting Board



MWSM-651GPSB  
Salad Mixer



MWBM-651GPSB  
Bain Marie

## • OPTIONAL ACCESSORIES



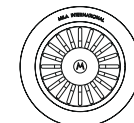
MBG-6519GPSB  
Basin Grid



MWC-651GPSB  
Colander



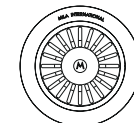
MWSS-651GPSB  
Side Sink



MKD-101GPSB  
Strainer



MDC-101GPSB  
Disposal Collar



MDC-102GPSB  
Disposal Collar

TRI-MOUNT