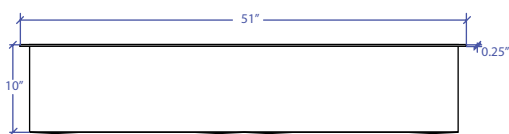
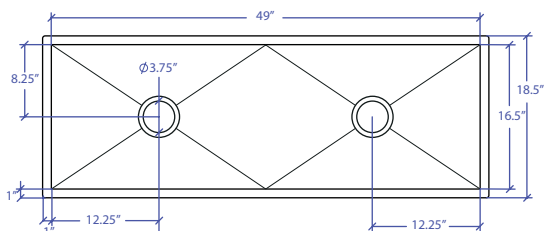


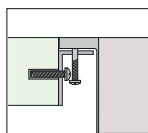
# WORKSTATION MFWS-649SB



**INDUSTRY'S ONLY STAINLESS STEEL SINK DESIGNED SPECIFICALLY TO BE FLUSH-MOUNTED**



- **FEATURES**  
16-gauge type 304 stainless steel  
5-gauge 304 stainless steel rim
- **TECHNICAL INFORMATION**  
External dimension: 51"Lx18.5"Wx10"D  
Basin dimensions: 49"Lx16.5"Wx10"D  
Rim width: 1"  
Rim thickness: 1/4"  
Rim Corner: 1/4" round
- **FINISHES**  
Satin Brushed stainless steel
- **INSTALLATION OPTIONS**  
Flush-mount
- **MINIMUM CABINET SIZE (I.D.)**  
Flush-mount 53"
- **INSTALLATION TYPE**

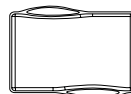


Flush-mount

## INCLUDED ACCESSORIES



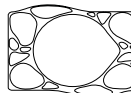
Flush Mount Kit  
MTK-621AL



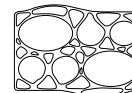
MWCB-651BB  
Cutting Board



MWC-651SB  
Colander



MWSM-651SB  
Salad Mixer

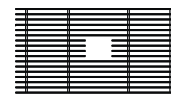


MWBM-651SB  
Bain Marie

## OPTIONAL ACCESSORIES



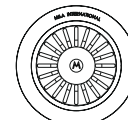
MBG-6520SB  
Basin Grid



MBG-6520SB  
Basin Grid



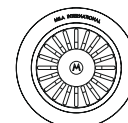
MWSS-651SB  
Side Sink



MKD-101SB  
Strainer



MDC-101SB  
Disposal Collar



MDC-102SB  
Disposal Collar

US Patent No. 9,988,799 CA Patent No. 2579506  
International Patent Pending

PROJECT INFORMATION			
Project			
Date	/ /	QTY	
Specifier			
Contact			
Note			

TRI-MOUNT