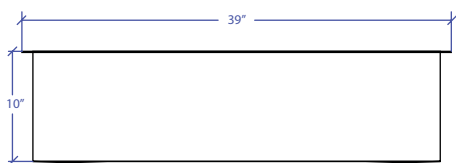
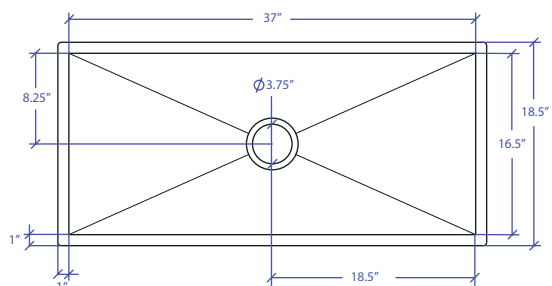


WORKSTATION MUWS-637GPSB



INDUSTRY'S ONLY STAINLESS STEEL SINK DESIGNED SPECIFICALLY TO BE FLUSH-MOUNTED



• FEATURES

- 16-gauge type 304 stainless steel
- 5-gauge 304 stainless steel rim

• TECHNICAL INFORMATION

- External dimension: 39"Lx18.5"Wx10"D
- Basin dimensions: 37"Lx16.5"Wx10"D
- Rim width: 1"
- Rim thickness: 1/4"
- Rim Corner: 1/4" round

• FINISHES

- Graphite PVD Satin Brushed stainless steel

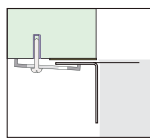
• INSTALLATION OPTIONS

- Under-mount

• MINIMUM CABINET SIZE (I.D.)

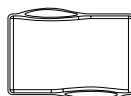
- Under-mount 41"

• INSTALLATION TYPE

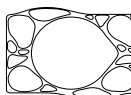


Under-mount

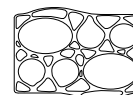
• INCLUDED ACCESSORIES



MWCB-651GPBB
Cutting Board

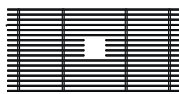


MWSM-651GPSB
Salad Mixer



MWBM-651GPSB
Bain Marie

• OPTIONAL ACCESSORIES



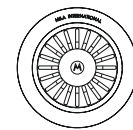
MBG-6519GPSB
Basin Grid



MWC-651GPSB
Colander



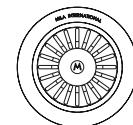
MWSS-651GPSB
Side Sink



MKD-101GPSB
Strainer



MDC-101GPSB
Disposal Collar



MDC-102GPSB
Disposal Collar

US Patent No. 9,988,799 CA Patent No. 2579506
International Patent Pending

PROJECT INFORMATION			
Project			
Date	/ /	QTY	
Specifier			
Contact			
Note			