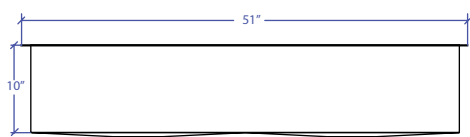
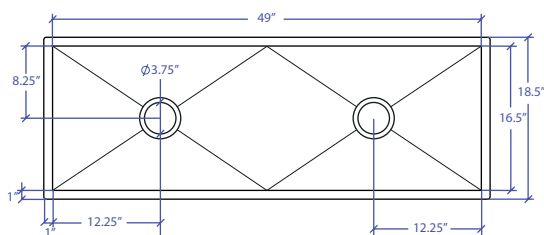


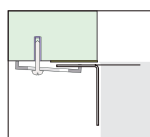
# WORKSTATION MUWS-649GPSB



INDUSTRY'S ONLY STAINLESS STEEL SINK DESIGNED SPECIFICALLY TO BE FLUSH-MOUNTED

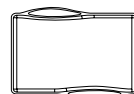


- FEATURES**  
 16-gauge type 304 stainless steel  
 5-gauge 304 stainless steel rim
- TECHNICAL INFORMATION**  
 External dimension: 51"Lx18.5"Wx10"D  
 Basin dimensions: 49"Lx16.5"Wx10"D  
 Rim width: 1"  
 Rim thickness: 1/4"  
 Rim Corner: 1/4" round
- FINISHES**  
 Graphite PVD Satin Brushed stainless steel
- INSTALLATION OPTIONS**  
 Under-mount
- MINIMUM CABINET SIZE (I.D.)**  
 Under-mount 53"
- INSTALLATION TYPE**

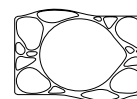


Under-mount

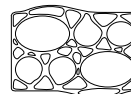
## INCLUDED ACCESSORIES



MWCB-651GPBB  
Cutting Board



MWSM-651GPSB  
Salad Mixer

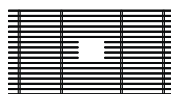


MWBM-651GPSB  
Bain Marie

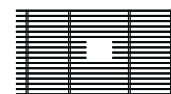


MWC-651GPSB  
Colander

## OPTIONAL ACCESSORIES



MBG-6520GPSB  
Basin Grid



MBG-6520GPSB  
Basin Grid



MWSS-651GPSB  
Side Sink



MKD-101GPSB  
Strainer



MDC-101GPSB  
Disposal Collar



MDC-102GPSB  
Disposal Collar

US Patent No. 9,988,799 CA Patent No. 2579506  
International Patent Pending

PROJECT INFORMATION			
Project			
Date	/ /	QTY	
Specifier			
Contact			
Note			