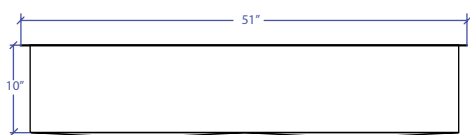
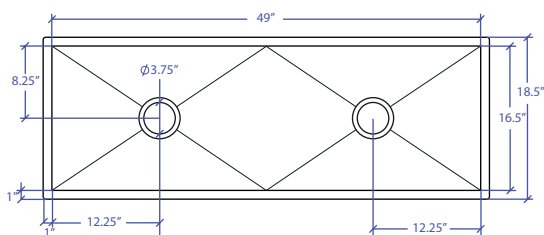


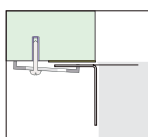
WORKSTATION MUWS-649GDSB



INDUSTRY'S ONLY STAINLESS STEEL SINK DESIGNED SPECIFICALLY TO BE FLUSH-MOUNTED

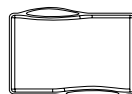


- FEATURES**
 16-gauge type 304 stainless steel
 5-gauge 304 stainless steel rim
- TECHNICAL INFORMATION**
 External dimension: 51"Lx18.5"Wx10"D
 Basin dimensions: 49"Lx16.5"Wx10"D
 Rim width: 1"
 Rim thickness: 1/4"
 Rim Corner: 1/4" round
- FINISHES**
 Gold PVD Satin Brushed stainless steel
- INSTALLATION OPTIONS**
 Under-mount
- MINIMUM CABINET SIZE (I.D.)**
 Under-mount 53"
- INSTALLATION TYPE**

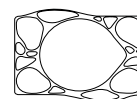


Under-mount

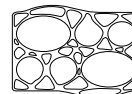
INCLUDED ACCESSORIES



MWCB-651GDBB
Cutting Board



MWSM-651GDSB
Salad Mixer

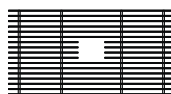


MWBM-651GDSB
Bain Marie

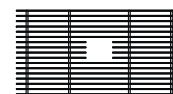


MWC-651GDSB
Colander

OPTIONAL ACCESSORIES



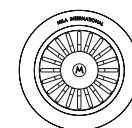
MBG-6520GDSB
Basin Grid



MBG-6520GDSB
Basin Grid



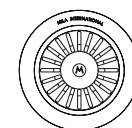
MWSS-651GDSB
Side Sink



MKD-101GDSB
Strainer



MDC-101GDSB
Disposal Collar



MDC-102GDSB
Disposal Collar

US Patent No. 9,988,799 CA Patent No. 2579506
International Patent Pending

PROJECT INFORMATION			
Project			
Date	/ /	QTY	
Specifier			
Contact			
Note			