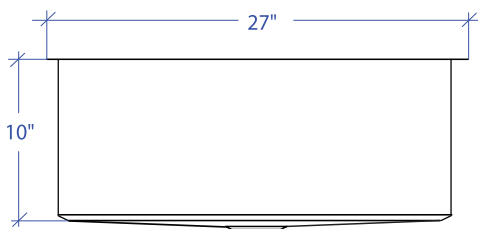
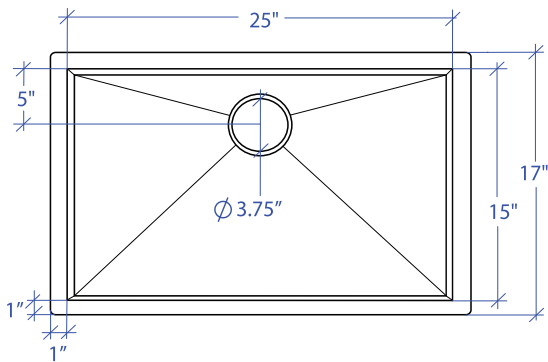


# ORION MOUS-503GPSB



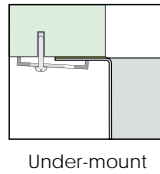
\*Custom ADA compliant sinks are available



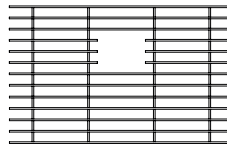
- **FEATURES**  
16-gauge type 304 stainless steel  
Bevel basin design
- **TECHNICAL INFORMATION**  
External dimension: 27" Lx17" Wx10" D  
Basin dimensions: 25" Lx15" Wx10" D
- **FINISHES**  
Graphite PVD Satin Brushed stainless steel
- **INSTALLATION OPTIONS**  
Under-mount
- **MINIMUM CABINET SIZE (I.D.)**  
Under-mount 30"

## • US DESIGN PATENT D618,324 S

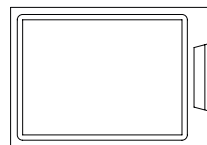
## • DUAL-MOUNT INSTALLATION



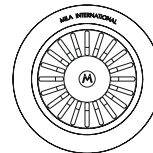
## • ACCESSORY OPTIONS



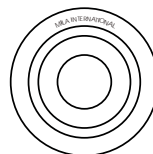
MBG-055GPSB  
Basin Grid



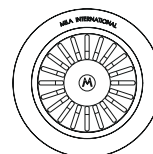
MCB-501BB  
Cutting Board



MKD-101GPSB  
Strainer



MDC-101GPSB  
Disposal Collar



MDC-102GPSB  
Disposal Collar

PROJECT INFORMATION			
Project			
Date	/ /	QTY	
Specifier			
Contact			
Note			