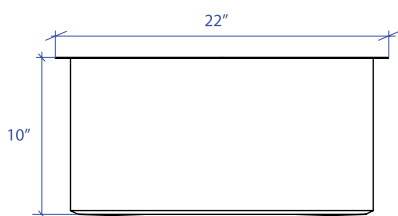
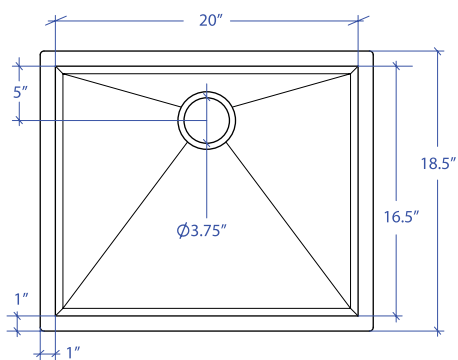


ORION MOUS-652SB



*Custom ADA compliant sinks are available



• FEATURES

16-gauge type 304 stainless steel
Bevel basin design

• TECHNICAL INFORMATION

External dimension: 22" L x 18.5" W x 10" D
Basin dimensions: 20" L x 16.5" W x 10" D

• FINISHES

Satin Brushed stainless steel

• INSTALLATION OPTIONS

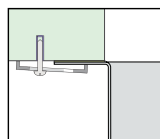
Under-mount

• MINIMUM CABINET SIZE (I.D.)

Under-mount 25"

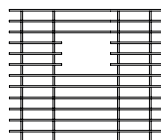
• US DESIGN PATENT D618,324 S

• DUAL-MOUNT INSTALLATION

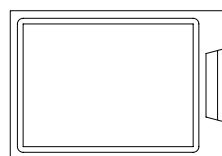


Under-mount

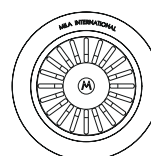
• ACCESSORY OPTIONS



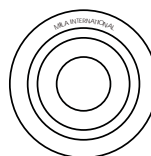
MBG-6507SB
Basin Grid



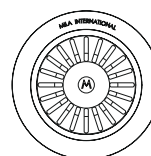
MCB-651BB
Cutting Board



MKD-101SB
Strainer



MKD-101SB
Disposal Collar



MDC-102SB
Disposal Collar

PROJECT INFORMATION			
Project			
Date	/ /	QTY	
Specifier			
Contact			
Note			