

ADA STANDARDS FOR ACCESSIBLE DESIGN

Mila International ADA compliant sinks, fully support an accessible and user friendly space.

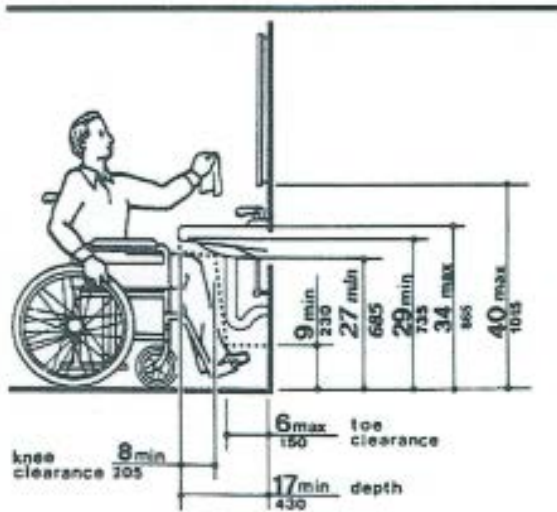


Fig. 31
Lavatory Clearances

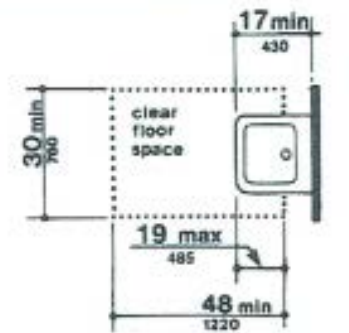


Fig. 32
Clear Floor Space at Lavatories

4.24 SINKS

4.24.1 General. Sinks required to be accessible by 4.1 shall comply with 4.24.

4.24.2 Height. Sinks shall be mounted with the counter or rim no higher than 34" (865 mm) above the finish floor.

4.24.3 Knee Clearance. Knee clearance that is at least 27" (685 mm) high, 30" (760 mm) wide, and 19" (485 mm) deep shall be provided underneath sinks.

4.24.4 Depth. Each sink shall be a maximum of 6-1/2" (165 mm) deep.

4.24.5 Clear Floor Space. A clear floor space at least 30" by 48" (760 mm by 1,220 mm) complying with 4.2.4 shall be provided in front of a sink to allow forward approach. The clear floor space shall be on an accessible route and shall extend a maximum of 19" (485 mm) underneath the sink (see Fig.32)

4.24.6 Exposed Pipes and Surfaces. Hot water and drain pipes exposed under sinks shall be insulated or otherwise configured so as to protect against contact. There shall be no sharp or abrasive surfaces under sinks.

4.24.7 Faucets. Faucets shall comply with 4.27.4. Lever-operated, push-type, touch-type, or electronically controlled mechanisms are acceptable designs.