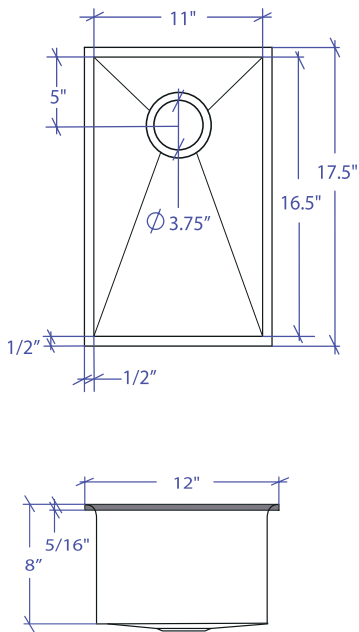


CRESCENT MCFS-651GDSB



*Flush-Mount Installation Kit is included with each sink
*Custom ADA compliant versions are available



• FEATURES

16-gauge type 304 stainless steel
Stainless steel rim support tubing
1/4" round rim and basin design

• TECHNICAL INFORMATION

External dimension: 12" L x 17.5" W x 8" D
Basin dimensions: 11" L x 16.5" W x 8" D
Rim width: 1/2"
Rim thickness: 5/16"

• FINISHES

Gold PVD satin brushed stainless steel

• INSTALLATION OPTIONS

Flush-mount

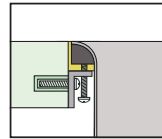
• MINIMUM CABINET SIZE (I.D.)

Flush-mount 15"

• INDUSTRY'S ONLY STAINLESS STEEL SINK DESIGNED SPECIFICALLY TO BE FLUSH-MOUNTED

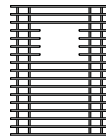
• INTERNATIONAL PATENT PENDING

• FLUSH-MOUNT INSTALLATION

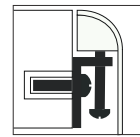


Flush-mount

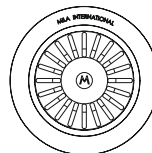
• ACCESSORIES OPTIONS



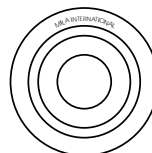
MBG-6515GDSB
Basin Grid



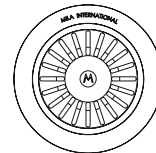
Flush Mount Kit
(Included)
MTK-614AL



MKD-101GDSB
Strainer



MDC-101GDSB
Disposal Collar



MDC-102GDSB
Disposal Collar

PROJECT INFORMATION

Project			
Date	/ /	QTY	
Specifier			
Contact			
Note			

FLUSH-MOUNT