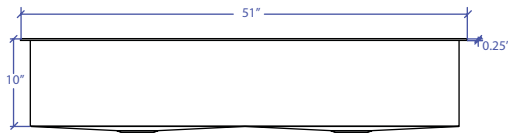
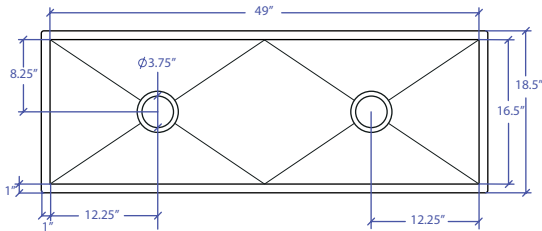


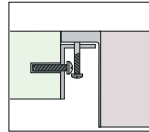
WORKSTATION MFWS-649SB



INDUSTRY'S ONLY STAINLESS STEEL SINK DESIGNED SPECIFICALLY TO BE FLUSH-MOUNTED



- **FEATURES**
 - 16-gauge type 304 stainless steel
 - EZ clean bevel basin design
 - Space saving/ dual slide rail design
 - Dual drain design
- **TECHNICAL INFORMATION**
 - External dimension: 51"Lx18.5"Wx10"D
 - Basin dimensions: 49"Lx16.5"Wx10"D
 - Rim width: 1"
 - Rim thickness: 1/4"
 - Rim Corner: 1/4" round
- **FINISHES**
 - Satin Brushed stainless steel
- **INSTALLATION OPTIONS**
 - Flush-mount
- **MINIMUM CABINET SIZE (I.D.)**
 - Flush-mount 53"
- **INSTALLATION TYPE**

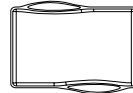


Flush-mount

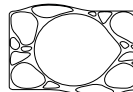
- **INCLUDED ACCESSORIES**



Flush Mount Kit
MTK-621AL



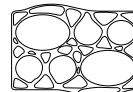
MWCB-651BB
Cutting Board



MWSM-651SB
Salad Mixer

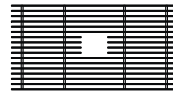


MWC-651SB
Colander

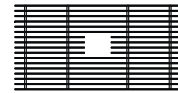


MWBM-651SB
Bain Marie

- **OPTIONAL ACCESSORIES**



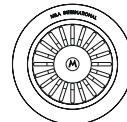
MBG-6520SB
Basin Grid



MBG-6520SB
Basin Grid



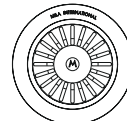
MWSS-651SB
Side Sink



MKD-101SB
Strainer



MDC-101SB
Disposal Collar



MDC-102SB
Disposal Collar

US Patent No. 9,988,799 CA Patent No. 2579506
International Patent Pending

PROJECT INFORMATION			
Project			
Date	/ /	QTY	
Specifier			
Contact			
Note			

TRI-MOUNT