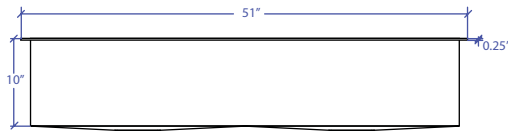
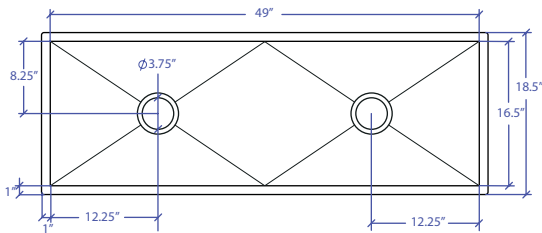


# WORKSTATION MFWS-649GPSB



INDUSTRY'S ONLY STAINLESS STEEL SINK DESIGNED SPECIFICALLY TO BE FLUSH-MOUNTED



## • FEATURES

- 16-gauge type 304 stainless steel
- EZ clean bevel basin design
- Space saving/ dual slide rail design
- Dual drain design

## • TECHNICAL INFORMATION

- External dimension: 51"Lx18.5"Wx10"D
- Basin dimensions: 49"Lx16.5"Wx10"D
- Rim width: 1"
- Rim thickness: 1/4"
- Rim Corner: 1/4" round

## • FINISHES

- Graphite PVD Satin Brushed stainless steel

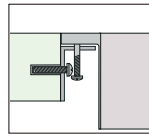
## • INSTALLATION OPTIONS

- Flush-mount

## • MINIMUM CABINET SIZE (I.D.)

- Flush-mount 53"

## • INSTALLATION TYPE

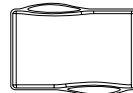


Flush-mount

## • INCLUDED ACCESSORIES



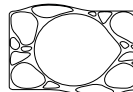
Flush Mount Kit  
MTK-621AL



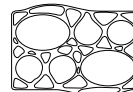
MWCB-651GPBB  
Cutting Board



MWC-651GPSB  
Colander

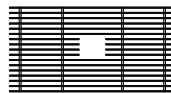


MWSM-651GPSB  
Salad Mixer

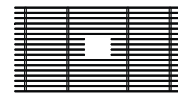


MWBM-651GPSB  
Bain Marie

## • OPTIONAL ACCESSORIES



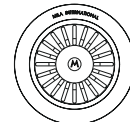
MBG-6520GPSB  
Basin Grid



MBG-6520GPSB  
Basin Grid



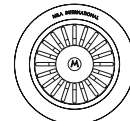
MWSS-651GPSB  
Side Sink



MKD-101GPSB  
Strainer



MDC-101GPSB  
Disposal Collar



MDC-102GPSB  
Disposal Collar

US Patent No. 9,988,799 CA Patent No. 2579506  
International Patent Pending

PROJECT INFORMATION			
Project			
Date	/ /	QTY	
Specifier			
Contact			
Note			

TRI-MOUNT