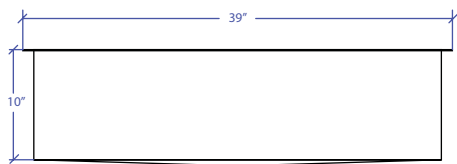
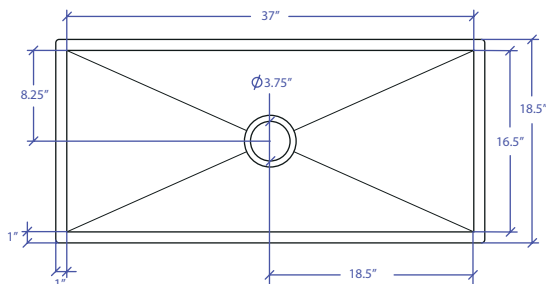


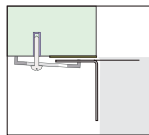
# WORKSTATION MUWS-637GDSB



INDUSTRY'S ONLY STAINLESS STEEL SINK DESIGNED SPECIFICALLY TO BE FLUSH-MOUNTED

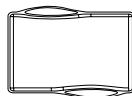


- FEATURES**  
 16-gauge type 304 stainless steel  
 EZ clean bevel basin design  
 Space saving/ dual slide rail design
- TECHNICAL INFORMATION**  
 External dimension: 39" Lx18.5" Wx10" D  
 Basin dimensions: 37" Lx16.5" Wx10" D  
 Rim width: 1"  
 Rim thickness: 1/16"
- FINISHES**  
 Gold PVD Satin Brushed stainless steel
- INSTALLATION OPTIONS**  
 Under-mount
- MINIMUM CABINET SIZE (I.D.)**  
 Under-mount 41"
- INSTALLATION TYPE**

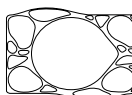


Under-mount

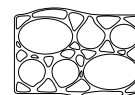
## INCLUDED ACCESSORIES



MWCB-651GDBB  
Cutting Board

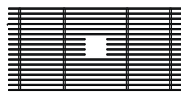


MWSM-651GDSB  
Salad Mixer



MWBM-651GDSB  
Bain Marie

## OPTIONAL ACCESSORIES



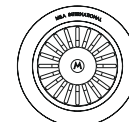
MBG-6519GDSB  
Basin Grid



MWC-651GDSB  
Colander



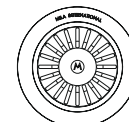
MWSS-651GDSB  
Side Sink



MKD-101GDSB  
Strainer



MDC-101GDSB  
Disposal Collar



MDC-102GDSB  
Disposal Collar

US Patent No. 9,988,799 CA Patent No. 2579506  
International Patent Pending

PROJECT INFORMATION			
Project			
Date	/ /	QTY	
Specifier			
Contact			
Note			