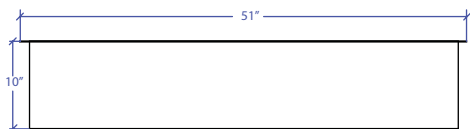
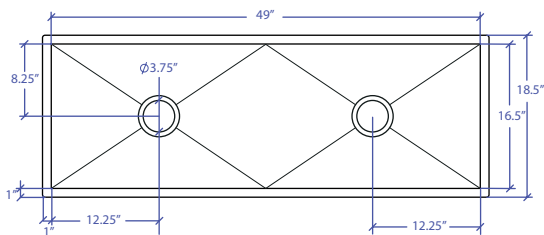


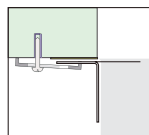
WORKSTATION MUWS-649GPSB



INDUSTRY'S ONLY STAINLESS STEEL SINK DESIGNED SPECIFICALLY TO BE FLUSH-MOUNTED

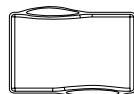


- FEATURES**
 16-gauge type 304 stainless steel
 EZ clean bevel basin design
 Space saving/ dual slide rail design
 Dual drain design
- TECHNICAL INFORMATION**
 External dimension: 51"Lx18.5"Wx10"D
 Basin dimensions: 49"Lx16.5"Wx10"D
 Rim width: 1"
 Rim thickness: 1/16"
- FINISHES**
 Graphite PVD Satin Brushed stainless steel
- INSTALLATION OPTIONS**
 Under-mount
- MINIMUM CABINET SIZE (I.D.)**
 Under-mount 53"
- INSTALLATION TYPE**



Under-mount

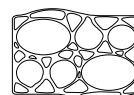
INCLUDED ACCESSORIES



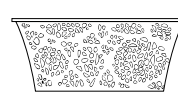
MWCB-651GPBB
Cutting Board



MWSM-651GPSB
Salad Mixer



MWBM-651GPSB
Bain Marie



MWC-651GPSB
Colander

OPTIONAL ACCESSORIES



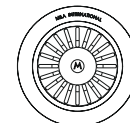
MBG-6520GPSB
Basin Grid



MBG-101GPSB
Basin Grid



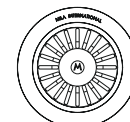
MWSS-651GPSB
Side Sink



MKD-101GPSB
Strainer



MDC-101GPSB
Disposal Collar



MDC-102GPSB
Disposal Collar

US Patent No. 9,988,799 CA Patent No. 2579506
International Patent Pending

PROJECT INFORMATION			
Project			
Date	/ /	QTY	
Specifier			
Contact			
Note			