

# WORKSTATION MUWS-649GDSB



INDUSTRY'S ONLY STAINLESS STEEL SINK DESIGNED SPECIFICALLY TO BE FLUSH-MOUNTED

- **FEATURES**  
16-gauge type 304 stainless steel  
EZ clean bevel basin design  
Space saving/ dual slide rail design  
Dual drain design

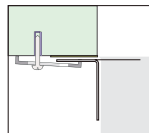
- **TECHNICAL INFORMATION**  
External dimension: 51"Lx18.5"Wx10"D  
Basin dimensions: 49"Lx16.5"Wx10"D  
Rim width: 1"  
Rim thickness: 1/16"

- **FINISHES**  
Gold PVD Satin Brushed stainless steel

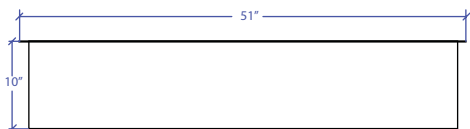
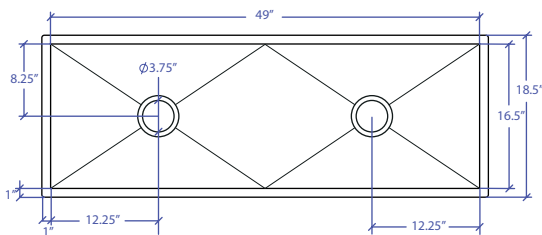
- **INSTALLATION OPTIONS**  
Under-mount

- **MINIMUM CABINET SIZE (I.D.)**  
Under-mount 53"

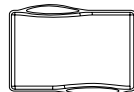
- **INSTALLATION TYPE**



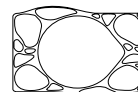
Under-mount



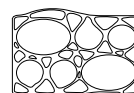
- **INCLUDED ACCESSORIES**



MWCB-651GDBB  
Cutting Board



MWSM-651GDSB  
Salad Mixer



MWBM-651GDSB  
Bain Marie



MWC-651GDSB  
Colander

- **OPTIONAL ACCESSORIES**



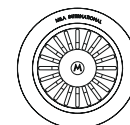
MBG-6520GDSB  
Basin Grid



MBG-6520GDSB  
Basin Grid



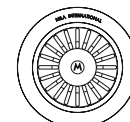
MWSS-651GDSB  
Side Sink



MKD-101GDSB  
Strainer



MDC-101GDSB  
Disposal Collar



MDC-102GDSB  
Disposal Collar

US Patent No. 9,988,799 CA Patent No. 2579506  
International Patent Pending

PROJECT INFORMATION			
Project			
Date	/ /	QTY	
Specifier			
Contact			
Note			

UNDER-MOUNT