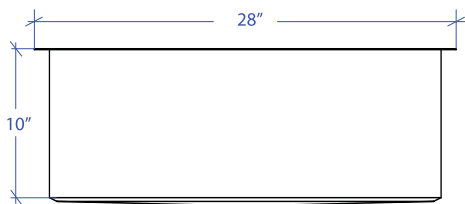
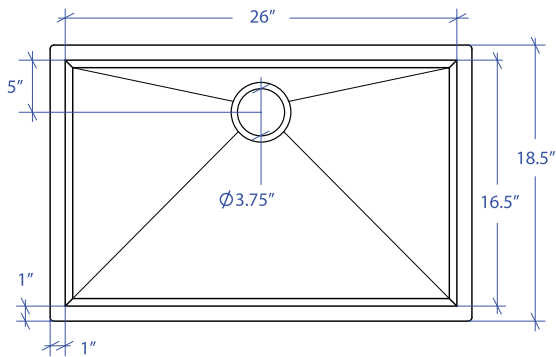


# ORION MOUS-654SB



\*Custom ADA compliant sinks are available



- **FEATURES**  
16-gauge type 304 stainless steel  
Bevel basin design

- **TECHNICAL INFORMATION**  
External dimension: 28" L x 18.5" W x 10" D  
Basin dimensions: 26" L x 16.5" W x 10" D  
Rim width: 1"  
Rim thickness: 1/16"

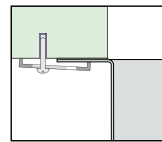
- **FINISHES**  
Satin brushed stainless steel

- **INSTALLATION OPTIONS**  
Under-mount

- **MINIMUM CABINET SIZE (I.D.)**  
Under-mount 31"

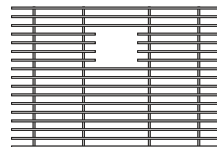
- **US DESIGN PATENT D618,324 S**

- **DUAL-MOUNT INSTALLATION**

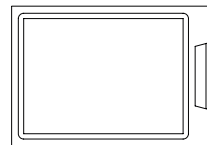


Under-mount

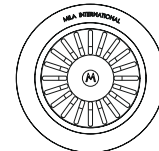
- **ACCESSORY OPTIONS**



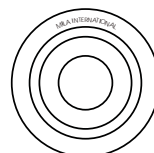
MBG-6510SB  
Basin Grid



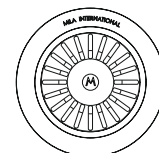
MCB-651BB  
Cutting Board



MKD-101SB  
Strainer



MDC-101SB  
Disposal Collar



MDC-102SB  
Disposal Collar

PROJECT INFORMATION			
Project			
Date	/ /	QTY	
Specifier			
Contact			
Note			