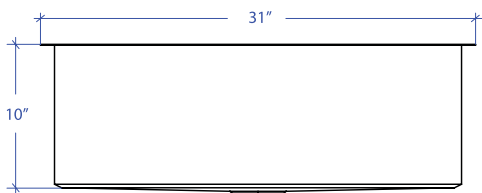
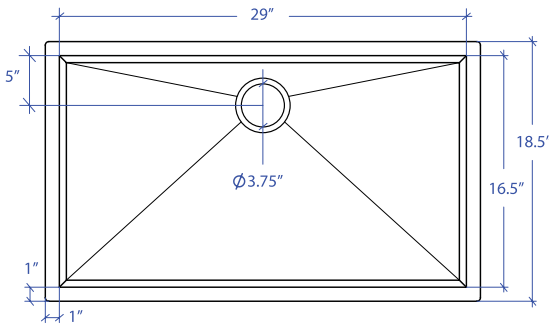


ORION MOUS-655GPSB



*Custom ADA compliant sinks are available



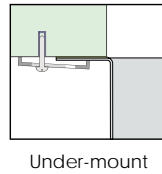
- **FEATURES**
16-gauge type 304 stainless steel
Bevel basin design
- **TECHNICAL INFORMATION**
External dimension: 31" Lx18.5" Wx10" D
Basin dimensions: 29" Lx16.5" Wx10" D
Rim width: 1"
Rim thickness: 1/16"

- **FINISHES**
Graphite PVD satin brushed stainless steel
- **INSTALLATION OPTIONS**
Under-mount

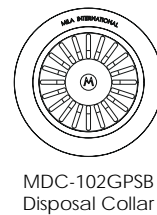
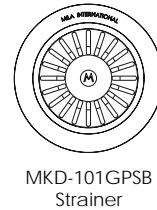
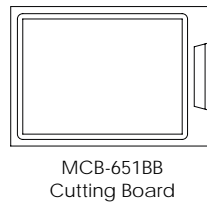
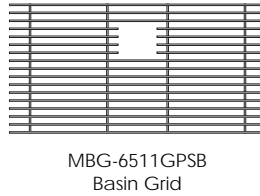
- **MINIMUM CABINET SIZE (I.D.)**
Under-mount 34"

• **US DESIGN PATENT D618,324 S**

• **DUAL-MOUNT INSTALLATION**



• **ACCESSORY OPTIONS**



PROJECT INFORMATION			
Project			
Date	/ /	QTY	
Specifier			
Contact			
Note			

UNDER-MOUNT