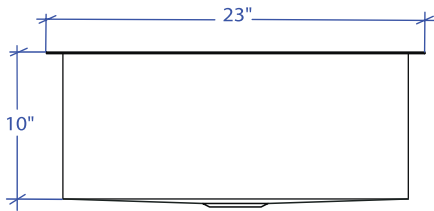
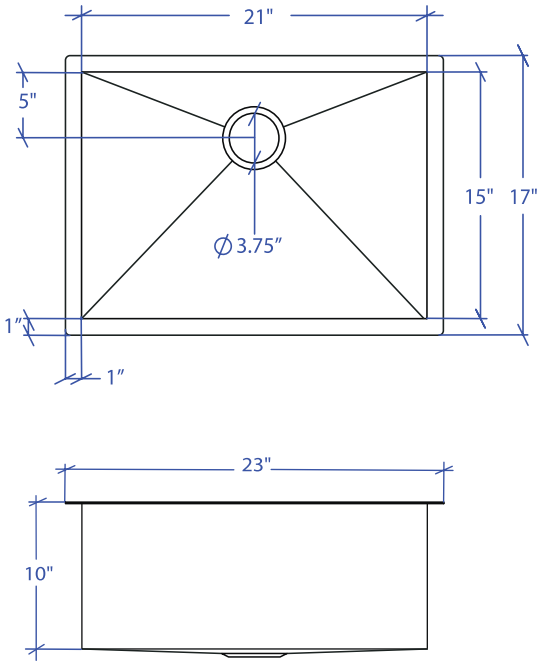


FLATIRON MUS-502GDSB



*Custom ADA compliant versions are available



- **FEATURES**
16-gauge type 304 stainless steel
90° zero radius design

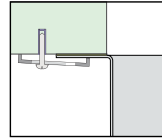
- **TECHNICAL INFORMATION**
External dimension: 23"Lx17"Wx10"D
Basin dimensions: 21"Lx15"Wx10"D
Rim width: 1"
Rim thickness: 1/16"

- **FINISHES**
Gold PVD satin brushed stainless steel

- **INSTALLATION OPTIONS**
Under-mount

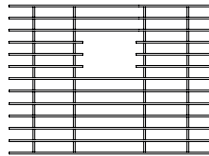
- **MINIMUM CABINET SIZE (I.D.)**
Under-mount 26"

- **DUAL-MOUNT INSTALLATION**

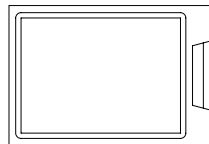


Under-mount

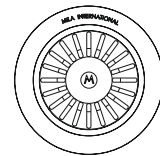
- **ACCESSORY OPTIONS**



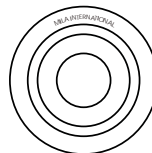
MBG-054GDSB
Basin Grid



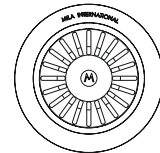
MCB-501BB
Cutting Board



MKD-101GDSB
Strainer



MDC-101GDSB
Disposal Collar



MDC-102GDSB
Disposal Collar

PROJECT INFORMATION			
Project			
Date	/ /	QTY	
Specifier			
Contact			
Note			

UNDER-MOUNT