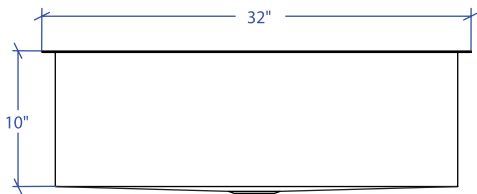
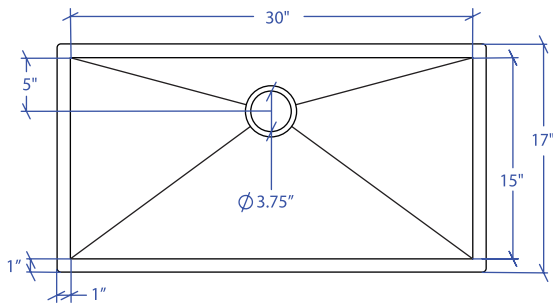


FLATIRON MUS-504GDSB



*Custom ADA compliant versions are available



• FEATURES

- 16-gauge type 304 stainless steel
- 90° zero radius design

• TECHNICAL INFORMATION

- External dimension: 32"Lx17"Wx10"D
- Basin dimensions: 30"Lx15"Wx10"D
- Rim width: 1"
- Rim thickness: 1/16"

• FINISHES

- Gold PVD satin brushed stainless steel

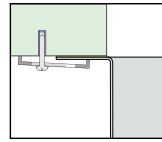
• INSTALLATION OPTIONS

- Under-mount

• MINIMUM CABINET SIZE (I.D.)

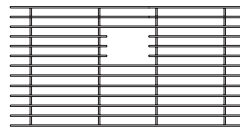
- Under-mount 35"

• DUAL-MOUNT INSTALLATION

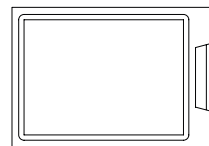


Under-mount

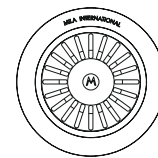
• ACCESSORY OPTIONS



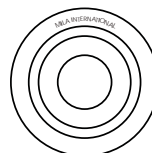
MBG-056GDSB
Basin Grid



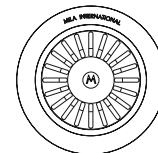
MCB-501BB
Cutting Board



MKD-101GDSB
Strainer



MDC-101GDSB
Disposal Collar



MDC-102GDSB
Disposal Collar

PROJECT INFORMATION

Project			
Date	/ /	QTY	
Specifier			
Contact			
Note			