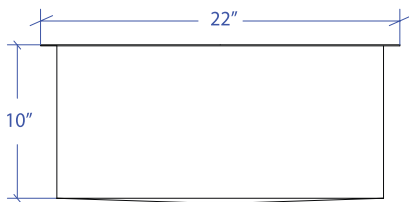
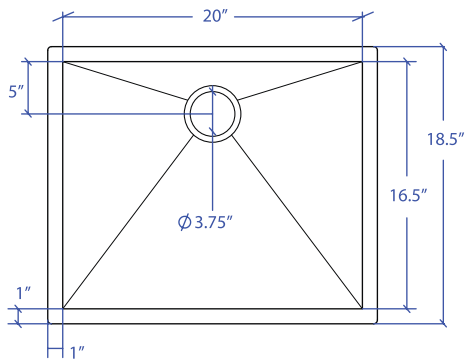


# FLATIRON MUS-652GPSB



\*Custom ADA compliant versions are available



## • FEATURES

16-gauge type 304 stainless steel  
90° zero radius design

## • TECHNICAL INFORMATION

External dimension: 22" Lx18.5" Wx10" D  
Basin dimensions: 20" Lx16.5" Wx10" D  
Rim width: 1"  
Rim thickness: 1/16"

## • FINISHES

Graphite PVD satin brushed stainless steel

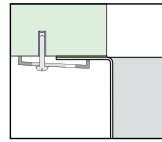
## • INSTALLATION OPTIONS

Under-mount

## • MINIMUM CABINET SIZE (I.D.)

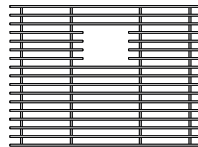
Under-mount 25"

## • DUAL-MOUNT INSTALLATION

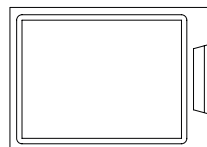


Under-mount

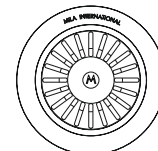
## • ACCESSORY OPTIONS



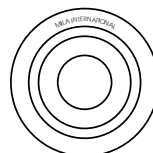
MBG-6507GPSB  
Basin Grid



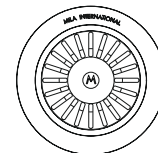
MCB-651BB  
Cutting Board



MKD-101GPSB  
Strainer



MDC-101GPSB  
Disposal Collar



MDC-102GPSB  
Disposal Collar

PROJECT INFORMATION			
Project			
Date	/ /	QTY	
Specifier			
Contact			
Note			

UNDER-MOUNT