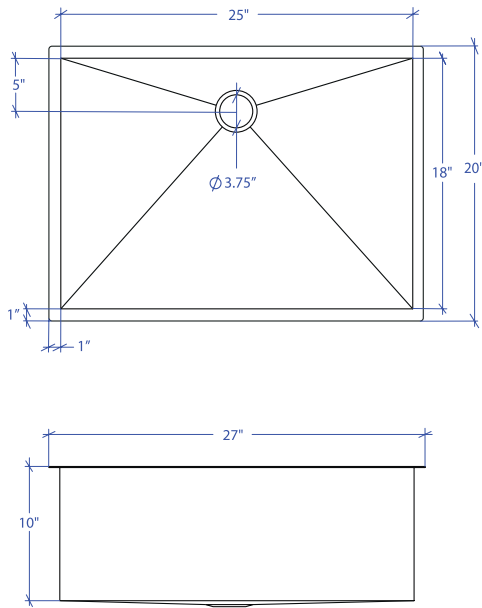


# FLATIRON MUS-805GPSB



\*Custom ADA compliant versions are available



## • FEATURES

- 16-gauge type 304 stainless steel
- 90° zero radius design

## • TECHNICAL INFORMATION

- External dimension: 27" Lx20" Wx10" D
- Basin dimensions: 25" Lx18" Wx10" D
- Rim width: 1"
- Rim thickness: 1/16"

## • FINISHES

- Graphite PVD satin brushed stainless steel

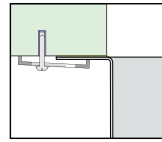
## • INSTALLATION OPTIONS

- Under-mount

## • MINIMUM CABINET SIZE (I.D.)

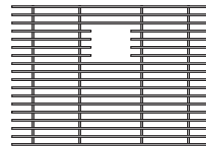
- Under-mount 30"

## • DUAL-MOUNT INSTALLATION

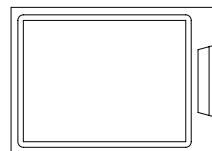


Under-mount

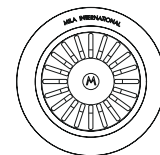
## • ACCESSORY OPTIONS



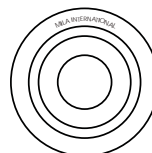
MBG-085GPSB  
Basin Grid



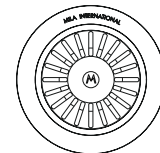
MCB-801BB  
Cutting Board



MKD-101GPSB  
Strainer



MDC-101GPSB  
Disposal Collar



MDC-102GPSB  
Disposal Collar

PROJECT INFORMATION			
Project			
Date	/ /	QTY	
Specifier			
Contact			
Note			

UNDER-MOUNT