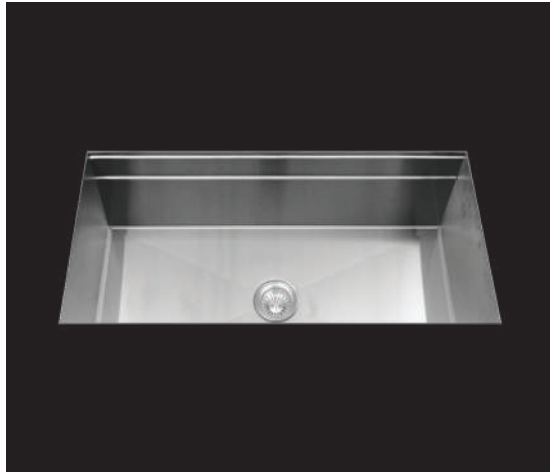


# WORKSTATION MUWS-631SB



## FEATURES

- 16-gauge type 304 stainless steel
- 5-gauge 304 stainless steel rim

## TECHNICAL INFORMATION

- External dimension: 33" L x 18.5" W x 10" D
- Basin dimensions: 31" L x 16.5" W x 10" D
- Rim width: 1" • Rim thickness: 1/16"

## FINISHES

- Satin Brushed stainless steel

## INSTALLATION OPTIONS

- Under-mount

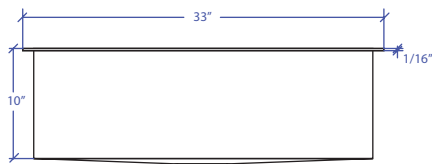
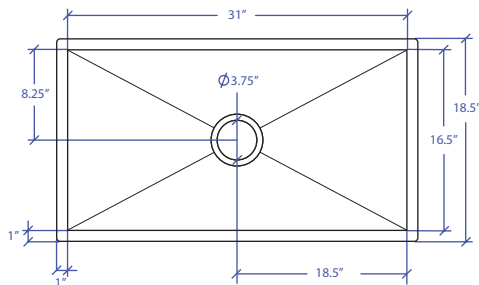
## MINIMUM CABINET SIZE (I.D.)

- Under-mount 36"

## INSTALLATION TYPE



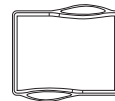
Under-mount



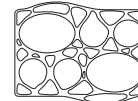
US Patent No. 9,988,799 CA Patent No. 2579506  
International Patent Pending

PROJECT INFORMATION			
Project			
Date	/ /	QTY	
Specifier			
Contact			
Note			

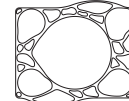
## OPTIONAL ACCESSORIES



MWCB-651SB  
Cutting Board



MWBM-651SB  
Bain Marie



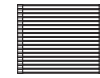
MWSM-651SB  
Salad Mixer



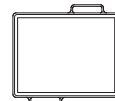
MWC-651SB  
Colander



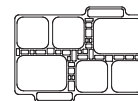
MWSS-651SB  
Side Sink



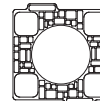
MWRG-651SB  
Roll up Grid



MWCBFLW-651SB  
Cutting Board



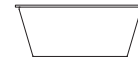
MWBMFLW-651SB  
Bain Marie



MWSMFLW-651SB  
Salad Mixer



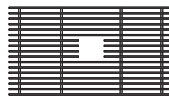
MWCFW-651SB  
Colander



MWSSFLW-651SB  
Side Sink



MWSA-651SB  
Salad Spinner Adapter



MBG-631SB Basin Grid



MKD-101SB  
Strainer



MDC-101SB  
Disposal Collar



MDC-102SB  
Disposal Collar

UNDER-MOUNT